

# Metal Blade Probes

## METAL BLADE PROBES

Accuprobe offers a wide selection of metal blade probes for semiconductor, hybrid circuit and laser trim applications. Blade probes are compatible with most probe card assembly machines and provide a stable and repairable solution for device test. Profiles to suit both hybrid and semiconductor applications are available in many standard working depths.

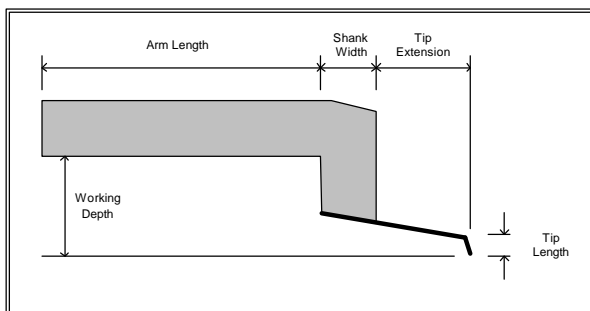
A unique feature of a number of Accuprobe metal blades is that the longer varieties may be shortened during assembly to more flexibly probe diverse device pad arrangements. Customers using the M or L versions of these metal blades only need to stock one item in inventory to meet short and long reach applications.

Accuprobe's metal blades can accommodate a diverse set of needles from 6 to 15 mils in diameter. Standard as well as custom tip extensions, tip lengths, bend angles and tip shapes may be specified.

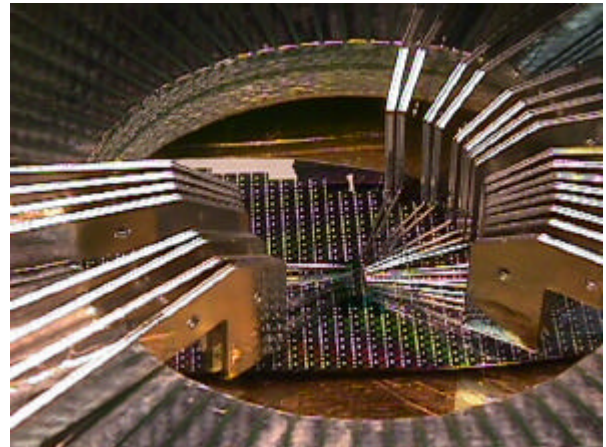
## BLADE SELECTION AND ORDERING

Select your metal blade style from the table that follows. A typical model number is BAMW3AF meaning:

- BA Small blade 144 mil working depth
- M Medium 552 mil arm length
- W Tungsten 10 mil needle
- 3A 1.5 mil tip diameter, 8 mil tip drop
- F Flat tip shape



Blade Geometry



BA & H		144 MILS TYP (3.658 mm)
BB		244 MILS TYP (6.198 mm)
BC		317 MILS TYP (8.052 mm)
BD		317 MILS TYP (8.052 mm)
BE		.472 MILS TYP (12 mm)
BF		1.080 MILS TYP (27.43 mm)
BG		244 MILS TYP (6.198 mm)

Probing the World  
of Microelectronics

# Metal Blade Probes

Profile	Size	Working Depth	Blade Thickness	Arm Length	Shank Width	Tip Extension	Tip Length
BA	S	144	15	378	152	200	8
BA	M	144	15	552	152	200	8
BA	L	144	15	1000	152	200	8
BB	S	244	20	452	180	250	15
BB	M	244	20	1710	180	250	15
BB	L	244	20	2320	180	250	15
BC	S	317	20	452	180	250	8
BC	M	317	20	1370	180	250	8
BC	L	317	20	2320	180	250	8
BD	L	317	32	2125	500	250	8
BE	L	472	32	2335	165	250	60
BF	L	1080	32	2310	190	250	60
BG	S	244	20	452	180	250	8
BG	M	244	20	1710	180	250	8
BG	L	244	20	2320	180	250	8
BH	S	144	15	347	143	230	15

\*all sizes in mils

**Blade Selection Table**

Type	Profile	Body Length				Needle Material Diameter		Tip Diameter "A"	Tip Drop "B"		Tip Shape
B   Metal blade	A	S	M	L	A	Tungsten	.006" (.152mm)	1*	.0005" (.0127mm)	A .008" (.2032mm)	F   Flat
	B	S	M	L	W	Tungsten	.010" (.254mm)	2	.001" (.0254mm)	B .015" (.381mm)	R   Radius
	C	S	M	L	WR	Tungsten Rh	.010" (.254mm)	3	.0015" (.0381mm)	C .030" (.762mm)	
	D			L	D	BeCu	.010" (.254mm)	4	.002" (.0508mm)	D .060" (1.524mm)	
	E			L	HD	Hard BeCu	.010" (.254mm)	5	.0025" (.0635mm)		
	F			L	P	Palladium	.010" (.254mm)	6	.0035" (.0889mm)		
	G	S	M	L	E	Tungsten	.012" (.3048mm)	7	.005" (.127mm)		
	H	S			ER	Tungsten Rh	.012" (.3048mm)	8	.010" (.254mm)		
C   Ceramic blade	Ceramic types only					C	BeCu	.012" (.3048mm)	9	.012" (.3048mm)	
	1	S	M		HC	Hard BeCu	.012" (.3048mm)	10	.015" (.381mm)		
	2	S	M		T	Tungsten	.015" (.381mm)				
	3		M		TR	Tungsten Rh	.015" (.381mm)				
	4	S	M		B	BeCu	.015" (.381mm)				
	5	S	M		HB	Hard BeCu	.015" (.381mm)				
	Z1	S	M								
	Z2	S	M								

**Note: Other tip drops are available up to 220 mils (5.6 mm)**

**Notes:**  
 1 BeCu not available in .0005" tip.  
 2 Not all combinations of tip material, Tip Drop "B", and tip diameter "A", are possible.

Accuprobe, Inc.  
 35 Congress Street.  
 Salem, MA 01970 USA  
 +1-978-745-7878  
 +1-978-745-7922 Fax  
 info@accuprobe.com

www.accuprobe.com



©2002 Accuprobe, Inc. Specifications may change without notice.  
 Accuprobe and the Accuprobe logo are trademarks of Accuprobe, Inc.